



HUMANITIES  
KANSAS



We ∞ the Humanities

ANNUAL REPORT

FY 2020

## Dear Friends,

Thank you.

This past year, Humanities Kansas responded to community cultural needs with humanities at home opportunities and pivoted resources to support local organizations. It was a year unlike any in recent memory, but the momentum behind HK's Movement of Ideas did not waver and that's because of you and your support.

Enthusiastic local project directors identified needs and used HK programs, grants, and special projects to reach out to their communities. Humanities scholars were quick to say yes when HK approached them about offering book discussions and history presentations online. Event participants learned to Zoom and together we sparked conversations, shared ideas, and connected with one another through our screens, on the phone, and when possible, in person.

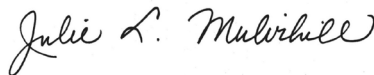
The results are amazing. This work couldn't happen on this scale or make this kind of impact across Kansas without generous and passionate donors whose contributions ensured that all HK events remained free and open to the public in whatever shape that took in 2020. You didn't miss a beat. The same is true for HK's board of directors and staff members who rose to every challenge.

Stories are the heart of this work. Since our founding as an independent nonprofit in 1972, Humanities Kansas has used stories rooted in the humanities to spark fresh thinking and navigate challenging conversations. Stories carry our culture; they educate and change us. The stories of this past year will unfold for generations to come and we gratefully connect ours to yours.

All the very best,

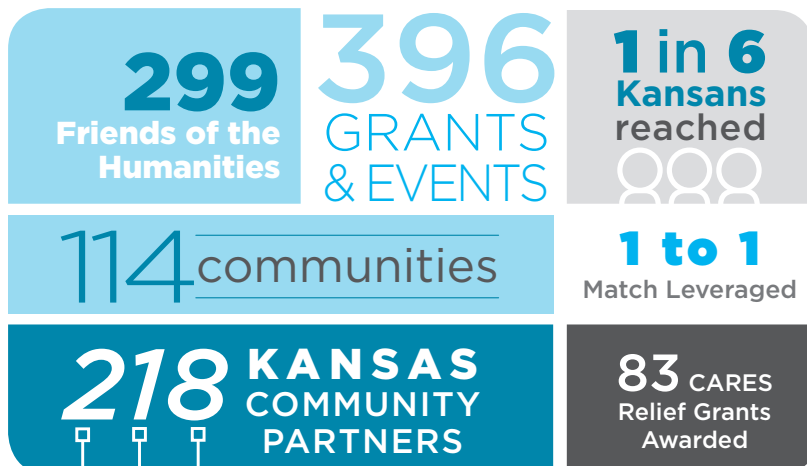


Jason Wesco  
Chair, Board of Directors (2020)



Julie L. Mulvihill  
Executive Director

## THE MOVEMENT OF IDEAS IN FY 2020



## HK 2020 Board of Directors

Patricia E. Ackerman, Abilene  
Brad Allen, Lawrence  
Kent Blansett, Lawrence  
Conny Bogaard, Garden City  
Lori A. Goetsch, Manhattan  
Kim Goodnight, Maize  
Natalie G. Haag, Topeka  
Nickolaus Hernandez, Dodge City  
Mike Heldstab, Wichita  
Brandon Hines, Hays  
Jane Holwerda, Dodge City  
James T. Lane, Overland Park  
Roetta Mann, Quinter  
Denise L. McNabb, Waverly  
Eric Norris, Lawrence  
Kim Perez, Hays  
Sheilah Philip, Overland Park  
Lisa Sisley, Manhattan  
Jason Wesco, Pittsburg (Chair)

## Staff

Julie L. Mulvihill,  
Executive Director  
Leslie Daugharthy,  
Director of Finance  
Abigail Kaup,  
Program Officer  
Tracy Quillin,  
Associate Director  
Leighann Thone,  
Development Officer  
Leslie VonHolten,  
Director of Grants and Outreach

**On the cover:** *Crossroads: Change in Rural America* Smithsonian exhibition at the Volland Store, Alma.

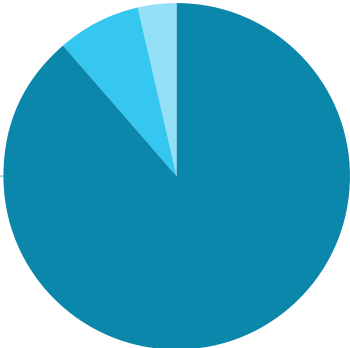
# FY 2020 Financial Overview

November 1, 2019 – October 31, 2020

HK receives income from diverse public and private sources. The National Endowment for the Humanities remained the single most important source of income in 2020, providing 89% of HK revenues. The private sector provided 8%, with 3% coming from the State of Kansas. In Fiscal Year 2020, Kansans contributed \$724,796.62 in Cost Share and In-Kind Services. In FY 2020, HK received \$471,468 in relief funds from the Coronavirus Aid, Relief, and Economic Security (CARES Act) economic stabilization plan. These funds are included in the NEH and Program and Program Services categories.

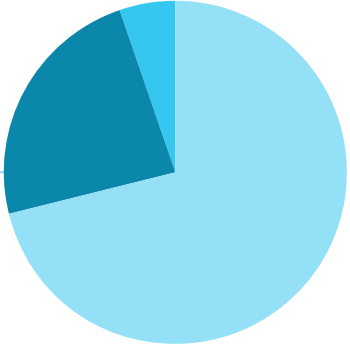
## INCOME

● NEH	\$ 1,257,567
● Private Donations, Earnings	\$ 107,503
● State of Kansas	\$ 50,501



## EXPENDITURES

● Program & Program Services	\$ 992,119
● General Management	\$ 328,386
● Financial Development	\$ 73,388



Full audited financial statements prepared by BT&Co., P.A., are available for review in the HK office.

# Friends of Humanities Kansas: Thank You!

The work of the Friends of Humanities Kansas is made possible by the generous support of the following individuals and organizations. This list reflects cumulative financial gifts received in Fiscal Year 2020 (November 1, 2019 – October 31, 2020).

\* *Friends who have given for 10 or more years.*

## WISDOM & VISION SOCIETY

**Humanities Kansas invites you to join the Wisdom & Vision Society. Tax-deductible annual contributions of \$1,000 or more support the movement of ideas across Kansas. Our warm thanks to the following individuals in the Wisdom & Vision Society for HK's Fiscal Year 2020.**

- \* Randolph Austin, Topeka  
CCS Family Fund – Topeka Community Foundation
- \* Jerry Lightcap, Offerle
- \* Susan Lynn & Brian Wolfe, Iola
- \* Gene & Barbara Merry, Burlington
- \* Craig Miner Family Trust, Wichita *In Memory of Craig Miner*
- \* Julie Mulvihill, Perry  
Paula K. Sauder, Emporia
- \* Kim Stanley & Tom Halliburton, McPherson
- \* Jason Wesco, Pittsburg *In Memory of William Stafford*

## INDIVIDUALS

### Lead (Donations of \$500-\$999)

- \* The Michael Bayouth Charitable Fund, Wichita
- \* Kelly & Patrick Landes, Junction City
- \* George Laughead, Lawrence  
James D. Oliver, Lenexa
- \* Tim & Jerrye Van Leer, Phoenix AZ

### Inspire (Donations of \$250-\$499)

- Brad Allen & Erin Bennett, Lawrence
- William Benso, Lawrence
- \* Mary Cottom, Manhattan *In Memory of Nancy Stupnick Brumm*
- \* Deborah & John Divine, Salina
- \* Tex & Betty Fury Fund of Greater Salina Community Foundation
- \* John & Ines Gilbert, Lawrence  
Natalie Haag, Topeka
- \* Steven & Annabeth Hind, Hutchinson  
Brandon Hines, Ellis
- \* Kathleen Holt, Cimarron
- \* Jane M. Holwerda, Dodge City  
Sharon Kessinger, Marysville  
Elizabeth Kowalchuk, Lawrence
- \* Doreen Maronde, Lenexa
- \* Karen & John McCulloh, Manhattan
- \* Chuck Moore, Colby
- \* Joan Nothern, Middleton WI  
Sheilah Philip, Overland Park
- \* Ramon & Eva Powers, Topeka
- \* Tracy Quillin, Lawrence
- \* Robert & Elizabeth Ross, Wichita  
Kent Stehlik, Dodge City *In Memory of Joyce and Howard Stehlik*
- Peter & Pamela Steitz, Sun Prairie WI
- Douglas Stuckey, Pittsburg
- Wyatt & Roderick Townley, Shawnee Mission

- \* David & Barbara Walker, Tucson AZ
- \* Ron & Barbara Wood, Fort Scott

### Engage (Donations of \$150-\$249)

- Karlea Abel, Pittsburg
- Janet C. Armstead, Wamego
- Katherine Bailes, Overland Park
- \* Judy Carroll, Independence
- Sarah Ruiz Chavez, Olathe
- Dudley Donahue, Durham
- \* Peggy Frahm, Colby
- \* Susan & Kent Garlinghouse Fund-Topeka Community Foundation
- \* Virginia Gleason, Kinsley  
Lori Goetsch, Manhattan
- \* Howard W. Hildenbrand, Lecompton
- \* Martha Selfridge Housholder, M.D., Wichita
- \* Howell Giving Fund, Wichita *In Memory of John Howell*
- \* Jim Hoy, Emporia
- \* Anita L. Jones, Wichita  
Suzanne Lane, Topeka
- \* Judy Bontrager Langley, Hutchinson
- \* Carolyn Lindsey, Wichita
- \* Jim Maag, Topeka
- \* William Mai, Sharon Springs
- \* Carol Mullen, Lawrence
- \* Leo E. Oliva, Woodston
- \* John & Rachel Pannabecker, North Newton
- \* Loren Pennington, Emporia  
Kim Perez, Hays
- \* Tom Pott, Leawood  
Kris Roberts, Leavenworth
- \* Dr. Brigitte Roussel, Wichita
- \* Norman Saul, Lawrence
- \* Elizabeth Schultz, Lawrence
- \* Robert & Mary Seymour, Leavenworth  
Lisa Sisley, Manhattan

- \* Keith & Aldine Sprunger, North Newton
- \* John H. Stauffer, Topeka
- \* Paul M. Steele Trust, Colby  
Al & Jan Stevens, Dodge City
- \* Linda Stewart, Wellington *In Honor of the Chisholm Trail Museum Volunteers*
- \* Ann Strecker, Topeka  
Thomas & Lisa Stubbs, Topeka
- \* William Tsutsui & Marjorie Swann, Conway AR  
Leslie & Tim VonHolten, Lawrence  
Evelyn & Mike Wilson, Topeka *In Memory of Clarence and Levoe Zabel*
- Jack Wisman, Topeka

**Spark (Donations of \$50-\$149)**

- Anonymous (2)
- \* JoAnn Cool Albán, Savannah GA  
Alan Albers, Cunningham
- \* Lou Allen, Topeka  
David & Mary Kate Ambler, Lawrence  
Mark & Vergie Anderson, Kinsley  
Andi & Mark Andres, Newton
- \* Thomas F. Averill & Jeffrey Ann Goudie, Topeka
- \* Constance Banwart, Fort Scott
- \* Bill & Myrna Barnes, Elkhart
- \* Aaron Barnhart & Diane Eickhoff, Kansas City MO
- \* Angela O. Bates, Bogue  
Donna Becker, Newton  
Deborah K. Berges, Onaga *In Honor of Rheva Boswell*
- \* Donald Biggs, Leawood  
Theresa Brake, Kinsley *In Honor of Joan Weaver, Kinsley Librarian*  
Steve & Derie Briman, Topeka
- \* Tony Brown & Becky Henderson, Baldwin City  
Larry & Sonja Burke, Lawrence  
Catherine Campbell, Lawrence  
John Carlin, Manhattan
- \* Gene T. Chávez, Ed.D., Lenexa  
Milton Claassen, Newton  
Ellen Collier, Lawrence
- \* Mary Conrad, Kansas City  
Richard Cramer, Pratt  
Daniel Creitz, Pittsburg
- \* Virgil W. Dean, Lawrence  
Jeff & Brenda Dempsey, Derby  
Luke Desmond, Overland Park  
David E. & Elizabeth Domann Charitable Trust, a Donor-Advised Fund of the U.S. Charitable Gift Trust  
Chris & Kaye Drahozal, Lawrence  
Peg Dunlap, Topeka  
Ron & Dawn Dutton, Elmdale
- \* Jean Kygar Eblen, Lawrence  
Larry Erickson, Manhattan  
Christine Ewing, Wakarusa  
Jean Fanshier, Stafford *In Memory of Marion Hearn, President of Stafford Historical and Genealogical Society*  
Roger & Arilla Fedde, Mankato
- \* Michael J. Fox & Sue Schlegel, Lindsborg  
Pat Frederickson, Anne Frederickson, & Sue Zschoche, Wamego *In Memory of Ronald H. Frederickson*
- \* Rodger & Vivian Funk, Garden City  
Jim & Karen Gilpin, Iola  
Kim Goodnight, Maize
- \* Rosetta Graff, Kinsley

- \* Anne Greitl, Topeka  
Marlene Gritman, Glasco  
Susan Hague, Cedar Point  
Allan & Louise Hanson, Lawrence  
Saralyn Reece Hardy, Lawrence  
Jerry & Nan Harper, Lawrence
- \* C. Larry Heck, Wichita  
Becky Hege, Newton  
Mike Heldstab, Wichita  
Susan Hines, Spearville
- \* Raylene Hinz-Penner, Topeka
- \* Warren & Sharon Hixson, Hutchinson  
Greg Hoots & Cheryl Meditz, Kansas City
- \* Ken & Peggy Horton, Elkhart  
Mary Jane Hurley, Concordia
- \* Sarah J. Huskey, Iola  
Jane & Mickey Imber, Lawrence
- \* Bill Jenkins, Wichita  
Jennifer McLeod Kassebaum, Burdick  
Jim & Eloise Kelly, Independence  
Sarah Kirk, Lecompton  
Linda O'Nelio Knoll, Pittsburg  
Dr. William Krusemark, Kansas City MO  
Rachel Lamm, Colby  
Kathie Leighty, Ford  
Jim Leiker, Shawnee
- \* Nancy Keim Lengel, McPherson
- \* Linda M. Lewis, Lindsborg
- \* Jerry D. Lomshek, Pittsburg
- \* Jean Lundt, Independence
- \* Ruth Madell, Westmont IL  
J.A. Maska, Hays  
Shirley McClintock, Council Grove  
Michael McGrew, Lawrence  
James McHenry, Topeka *In Honor of Eric McHenry*  
Denise McNabb, Waverly
- \* Charles Menghini, Pittsburg
- \* Tim Miller, Lawrence
- \* Shala Mills, Rosendale NY  
Ann Miner, Colby
- \* Donna Jones Morris & Raymond Morris, Byers CO  
Linda Morse, Manhattan  
Julia K. Muller & Earl K. Shreckengast, St. Louis MO  
Robin & Dennis Newall, Emporia  
Miriam Nofsinger, North Newton  
Diana Palenz, Wichita  
Tracie Partridge, Wichita
- \* Ruth & Reed Peters, Larned  
Paul & Pat Phillips, Hays
- \* Joe Pierron & Diana Carlin, Lawrence  
Jordan & Britanni Poland, Wichita  
Robert Gregory Poole, Pittsburg  
Michelle & Brian Powell, Lawrence
- \* Jay Price, Wichita  
Andrea & Will Ramsey, Leawood
- \* Dr. M.C. Reay, Manhattan
- \* Roger & Lin Rhoades, Overland Park  
Bill & Linda Richter, Manhattan  
Gina Riedel, Gorham  
Murl Riedel, Topeka
- \* Sabatini Family Foundation, Topeka  
Sam Sackett, Wichita
- \* Barbara Schmidt, Independence
- \* Callie Seaton, Winfield *In Memory of F. David Seaton*
- \* Bradley & Susie Shaw, Manhattan
- \* Frances Siemens, North Newton

Continued on page 6



- Paula & Kerry Smith, Marysville  
Martha Spacek, Topeka  
Anita Specht, Salina
- \* Clinton & Delaine Stalker, Satanta
  - William Stapleton, Belpre
  - Diana Staresinic-Deane, Ottawa
  - George & Mary Stephenson, Lansing
  - \* Margy Stewart, Junction City
  - \* Allen & Ila Stone, Hutchinson
  - Susan Sutton, Concordia
  - \* John Sweets & Renée Melchiorre, Swannanoa NC  
*In Memory of Rev. Donald L. Conrad*
  - \* Deanell Tacha, Lawrence
  - John Edgar Tidwell, Lawrence
  - Jami Frazier Tracy, Valley Center
  - Karen Trail, Manhattan
  - \* John & Kathy Triplett, Junction City
  - \* Nancy Vogel, Lawrence
  - Nancy Wagner, Topeka
  - \* Laurie Ward, Lawrence
  - \* Alison Watkins, Lawrence
  - \* Carmaletta Williams, Grandview MO
  - \* James Woelfel, Lawrence *In Memory of Sarah Trulove*
  - Stephen Wolgast, Topeka
  - \* M. Lee Wright & Alice Eberhart-Wright, Topeka
  - Mitchel Zimmerman, Lawrence

#### **Movement (Donations of up to \$49)**

- Anonymous (1)  
Susan Adams, Wichita  
Sarah Bell, Lawrence  
Jennifer Bergen, Manhattan  
Galen Boehme, Offerle
- \* William Clyde Brown, Salina
  - Marcia Brox, Shawnee
  - Samuel Chapman, Overland Park
  - Leslie Daugharthy, Topeka
  - \* Bill Drews, Hutchinson
  - Kristen Epps, Manhattan
  - \* Bill & Eenie Fitzpatrick, Independence
  - Bruce Grover & Kate Digby, Manhattan
  - Jerry L. Hamm, Coffeyville
  - \* Ellen R. Hansen, Emporia
  - Layne Hunley, Holton
  - Val Ireland, Topeka
  - Paula & Denny Johnson, Baldwin City
  - Abigail Kaup, Lawrence
  - Sheila Lampe, Piqua
  - Stephanie Luna, Wichita
  - Ruth Maus, Topeka
  - \* Jerry & Catherine Newland, Silver Lake
  - \* Alvin & Gayle Peters, Garnett
  - Trish Reeves, Prairie Village
  - WenDee Rowe, Inman
  - John Salem, Wichita
  - \* Fayeann Sandstrum, Winfield
  - Pamela Sanfilippo, St. Louis MO
  - Larry Schwarm, Wichita
  - Mr. Lindsay Smith, Manhattan
  - Stacey Smith, Hays
  - \* George & Vikki Jo Stewart, Wichita
  - Larry Tenopir, Topeka
  - Leighann Thone, Lawrence
  - \* Sandra Wiechert, Lawrence *In Memory of  
Allen Wiechert*

## **ORGANIZATIONS**

### **Donations of \$20,000 or more**

The Andrew W. Mellon Foundation *Democracy and the Informed Citizen* Initiative through the Federation of State Humanities Councils, Washington D.C.

### **Donations of \$10,000-\$19,999**

ITC Holdings Corp, Topeka

### **Donations of \$1,000-\$9,999**

- \* Frahm Farmland, Inc., Colby
- \* Freedom's Frontier National Heritage Area, Lawrence
- Hall Center for the Humanities at the University of Kansas, Lawrence
- Topeka Community Foundation
- Western Kansas Community Foundation, Garden City

### **Donations of \$150-\$499**

- Basehor Community Library
- \* BT&Co., P.A., Topeka
  - Derby Public Library
  - Friends of Baldwin City Public Library
  - Manhattan Library Association
  - Oberlin City Library
  - \* Overland Park Historical Society
  - Pratt Public Library
  - The Volland Store, Alma

### **Donations of \$50-\$149**

- Aldersgate Village, Topeka
- \* Ashland Library
  - Butterfield Trail Association, Winona
  - Cause LLC, Manhattan
  - City of Wellington
  - \* Friends of the Augusta Public Library
  - Friends of Iola Public Library
  - \* Friends of Morrill Public Library, Hiawatha
  - \* Ford County Historical Society, Dodge City
  - Gardner Historical Museum
  - Glasco Community Foundation
  - \* Goodland Public Library
  - Greenwood Preservation Society, Eureka
  - Leonardville Nursing Home
  - Mankato City Library
  - Onaga Historical Society
  - Perry Pride
  - Rooks County Historical Society and Museum, Stockton
  - \* Santa Fe Trail Historical Society, Baldwin City
  - \* Sociedad Hidalgo, Inc., Shawnee
  - \* Stafford County Historical & Genealogical Society, Stafford
  - Thrive Allen County, Iola
  - Wilson County Conservation District, Fredonia

### **Donations of up to \$49**

AmazonSmile

*If we have not reported your gift correctly, please accept our apology and contact us: info@humanitieskansas.org or 785-357-0359.*

# Community Partners

Humanities Kansas collaborated with 218 Kansas nonprofit organizations in FY 2020 to spark conversations and generate insights through Humanities for All, Culture Preservation, Quick Grants, and CARES Act Relief Grants; community resource programs including the Poet Laureate of Kansas, Speakers Bureau, and Talk About Literature in Kansas; and the *Crossroads: Change in Rural America* and *Democracy and the Informed Citizen* statewide initiatives.

5.4.7 Arts Center, Greensburg  
 Abilene Public Library  
 Aldersgate Village, Topeka  
 Allen County Historical Society, Iola  
 Amelia Earhart Birthplace Museum, Atchison  
 Arkansas City Area Arts Council  
 Arts & Medicine Program KU School of Medicine, Kansas City  
 ArtsConnect Topeka  
 Ashland Library  
 Atchison Amelia Earhart Foundation  
 Atchison Public Library  
 Atwood Public Library  
 Augusta Public Library  
 Basehor Community Library  
 Bonner Springs City Library  
 Boot Hill Museum, Dodge City  
 Bowlus Fine Arts Center, Iola  
 Bradford Memorial Library, El Dorado  
 Brewster Place Retirement Community, Topeka  
 Brown County Historical Society, Hiawatha  
 Butler Community College, Community Advancement, El Dorado  
 Butler Community College Library & Archives, El Dorado  
 Caldwell Public Library  
 Chanute Public Library  
 Chapman Area Preservation Society  
 Cheney Lake Watershed, Inc., Arlington  
 Chisholm Trail Seniors, Wichita  
 Cimarron City Library  
 City of Neodesha  
 City of Sedan  
 Clearwater Public Library  
 Coffeyville Historical Society  
 Coffeyville Public Library  
 Courtland Arts Council  
 Dickinson County Historical Society, Abilene  
 Do Good Productions, Inc., Overland Park  
 Dodge City Community College  
 Dodge City Public Library  
 Doniphan County Historical Society, Troy  
 Donnelly College, Kansas City  
 Dorothy Bramlage Public Library, Junction City  
 Douglas County Historical Society, Lawrence  
 Dyck Arboretum of the Plains, Hesston  
 Edwards County Historical Society Museum, Kinsley  
 Effingham Community Library  
 Eisenhower Foundation, Abilene  
 Eisenhower Presidential Library, Museum, and Boyhood Home, Abilene  
 Ellinwood Community Historical Society  
 Ellinwood School & Community Library  
 Emporia Public Library  
 Emporia State University  
 Eudora Area Historical Society  
 Finney County Historical Society, Garden City  
 Flint Hills Discovery Center Foundation, Manhattan  
 Florence Historical Society  
 Ford County Historical Society, Dodge City  
 Fort Hays State University, Hays  
 Fort Hays State University, Department of History, Hays  
 Fort Larned Historical Society, Larned  
 Fort Wallace Museum, Wallace  
 Franklin County Historical Society/ Old Depot Museum, Ottawa  
 Freedom's Frontier National Heritage Area, Lawrence  
 Friends of Baldwin City Public Library  
 Friends of Leavenworth Public Library  
 Gardner Historical Museum  
 Garnett Public Library  
 Geary County Historical Society & Museums, Junction City  
 Goddard Public Library  
 Goodland Public Library  
 Greater Topeka Partnership  
 Gridley Branch of Coffey County Library  
 Harvester Arts, Wichita  
 Harvey County Historical Museum & Archives, Newton  
 Haskell Indian Nations University Foundation, Lawrence  
 Hays Public Library  
 Haysville Friends of the Library  
 Heritage Associates of Jennings, Inc.  
 Hesston Public Library  
 Hodgeman County Economic Development, Jetmore  
 Horton Public Library  
 Hutchinson Art Center  
 Hutchinson Public Library  
 Hyman Brand Hebrew Academy/ Jewish Community Center, Leawood  
 Independence Public Library  
 Interurban ArtHouse, Overland Park  
 Jackson County Historical and Genealogical Society, Holton  
 Jayhawk Breakfast Rotary Club & Ecumenical Ministry, Lawrence  
 Jefferson County Historical Society, Oskaloosa  
 Jetmore Public Library  
 Johnson County Museum, Overland Park  
 Johnson County Retired Teachers Association, Prairie Village  
 Kansas Authors Club, Hutchinson  
 Kansas Authors Club, Kechi  
 Kansas Authors Club, Lawrence  
 Kansas Aviation Museum, Wichita  
 Kansas Barbed Wire Collectors Association, La Crosse  
 Kansas City Kansas Public Library  
 Kansas City Latin Jazz Orchestra, Kansas City  
 Kansas Historical Foundation, Topeka  
 Kansas Cosmosphere and Space Center, Hutchinson  
 Kansas Farmers Union Foundation, Lawrence  
 Kansas Oral History Project, Inc., Topeka  
 Kansas Post Rock Limestone Coalition, Inc., Lucas  
 Kansas Public Telecommunications Service, Wichita  
 Kansas Territory Bottle & Postcard Club, Hutchinson  
 Kansas Wesleyan University, Salina  
 Kauffman Museum, North Newton  
 Kingman County Historical Society, Kingman  
 Kinsley Public Library  
 KMUW Wichita Public Radio  
 KTWU, Washburn University, Topeka  
 Lakeview Village Retirement Community, Lenexa  
 Lawrence Public Library Friends & Foundation  
 Lebanon Community Library  
 Lebo Branch of Coffey County Library  
 Legacy, A Regional Community Foundation, Winfield  
 Life in a Jar Foundation, Fort Scott  
 Linwood Community Library  
 Little House on the Prairie Museum, Independence  
 Louisburg Library  
 Lyon County History Center & Society, Emporia  
 Mahaffie Stagecoach Stop & Farm Historic Site, Olathe  
 Mamafilm, Wichita  
 Manhattan MLK Jr. Memorial Committee  
 Manhattan Public Library  
 Mankato City Library  
 Marais des Cygnes Chapter DAR, Osawatomie  
 Martin & Osa Johnson Safari Museum, Chanute  
 Mary Cotton Public Library, Sabetha  
 Marysville Public Library  
 McPherson County Old Mill Museum, Lindsborg  
 McPherson Museum & Arts Foundation  
 Medicine Lodge Peace Treaty Association  
 Mid-America All-Indian Center, Wichita  
 Mid-America Nazarene University, Olathe  
 Miners Hall Museum, Franklin  
 Mini-Moccasins, Inc., Lawrence  
 Monticello Community Historical Society, Shawnee  
 Morris County Historical Society, Council Grove  
 Moundridge Public Library  
 Museum of World Treasures, Wichita  
 National Orphan Train Complex and Research Center, Concordia  
 New Generation Society of Lawrence  
 Newton Public Library  
 Nickerson Public Library  
 Norton County Arts Council, Norton  
 Norton Public Library  
 NSDAR - Four Winds Chapter, Garnett  
 Oakley Public Library  
 Oberlin City Library  
 Olathe Public Library  
 Onaga Historical Society  
 Original Pony Express Station No. 1 & Museum, Marysville  
 Oskaloosa Public Library  
 Ottawa Library  
 Overland Park Historical Society  
 Oz Museum/Columbian Theatre Foundation, Inc., Wamego  
 Paola Free Library  
 Parsons Public Library  
 Pittsburg Public Library  
 Pittsburg State University  
 Pratt Public Library  
 Republic County Historical Society Museum, Belleville  
 Reno County Museum, Hutchinson  
 Reno County Historical Society, Hutchinson  
 Rice County Historical Society, Lyons  
 Richmond Public Library  
 Riley County Seniors' Service Center, Manhattan  
 Russell Public Library  
 Salina Art Center  
 Santa Fe Trail Association, Larned  
 Scott County Historical Society, Scott City  
 Shawnee County Historical Society, Topeka  
 Shepherd's Center of Kansas City  
 Smoky Hill Museum, Salina  
 Special Olympics Kansas, Inc., Mission  
 Stafford County Historical & Genealogical Society, Stafford  
 Stage 9, Hutchinson  
 Storytime Village, Inc., Wichita  
 Strataca: Kansas Underground Salt Museum, Hutchinson  
 Sumner County Historical & Genealogical Society, Winfield  
 Sunflower Outreach Service, Winfield  
 Tabor College, Hillsboro  
 The Kansas African American Museum, Wichita  
 The Volland Store, Alma  
 Thomas County Historical Society, Colby  
 Tonganoxie Community Historical Society  
 Tonganoxie Public Library  
 Topeka Collegiate Commons  
 Topeka Genealogical Society  
 Topeka & Shawnee County Public Library  
 Topeka Youth Project, Inc.  
 Trading Post Historical Society, Pleasanton  
 Trego County Historical Society, WaKeeney  
 Tri-State Antique Engine and Threshers Association, Bird City  
 United Methodist Men, Paola  
 University for Man, Community Learning Center, Manhattan  
 University of Kansas, Edwards Campus, Overland Park  
 University of Kansas Humanities Program, Lawrence  
 University Press of Kansas, Lawrence  
 Valley Center Public Library  
 Village Presbyterian Church, Prairie Village  
 Wabaunsee County Historical Society, Alma  
 Wamego Public Library  
 Washburn University, Topeka  
 Watkins Museum of History, Lawrence  
 Wichita County Library, Leoti  
 Wichita Genealogical Society  
 Wichita Public Library Foundation  
 Wichita-Sedgwick County Historical Museum  
 Wichita State University  
 Wichita State University Continuing Education  
 Wilson County Historical Society, Fredonia  
 Wilson County Old Iron Club, Fredonia  
 Winfield Public Library  
 World's Largest Things, Inc., Lucas  
 Wyandotte County Historical Society, Bonner Springs



# HUMANITIES KANSAS

112 SW 6th Ave, Suite 400  
Topeka, KS 66603  
P. (785) 357-0359  
F. (785) 357-1723

humanitieskansas.org  
info@humanitieskansas.org  
/humanitieskansas   
/humanitiesks

Nonprofit Org.  
U.S. Postage  
**PAID**  
Kansas City MO  
Permit No. 523

## The Movement on the Map HK OUTREACH FY 2020

Using HK grants and resources, 114 communities created 396 humanities opportunities for the people of Kansas in FY 2020.

